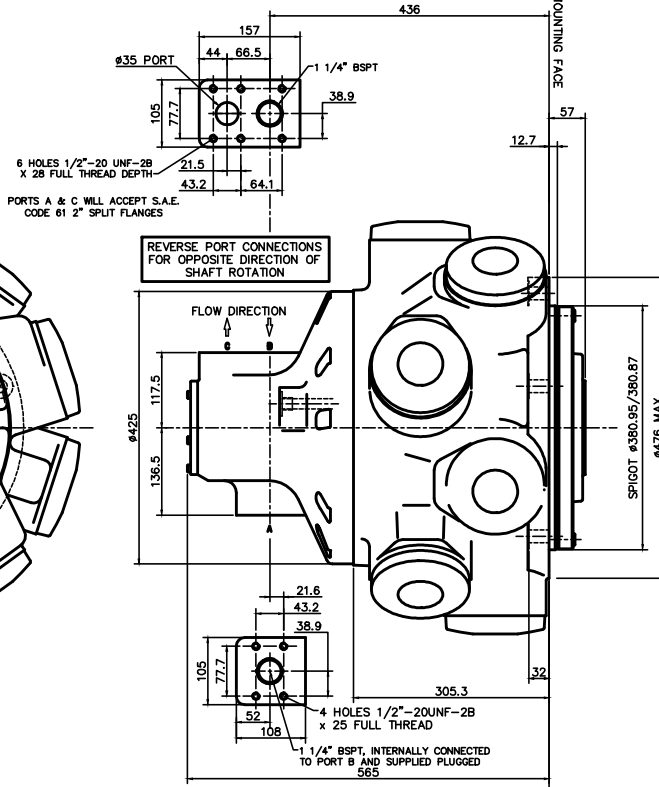
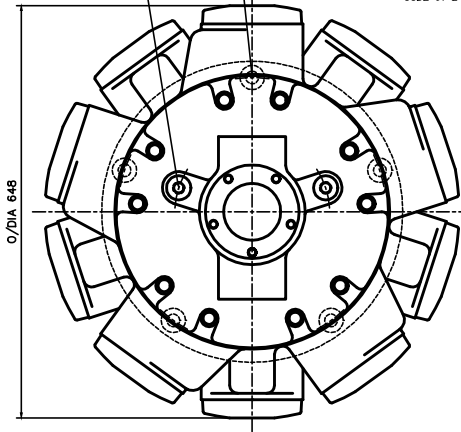


HMHDB400

EXAMPLE FOR MODEL CODE -
HMHDB400/P/70

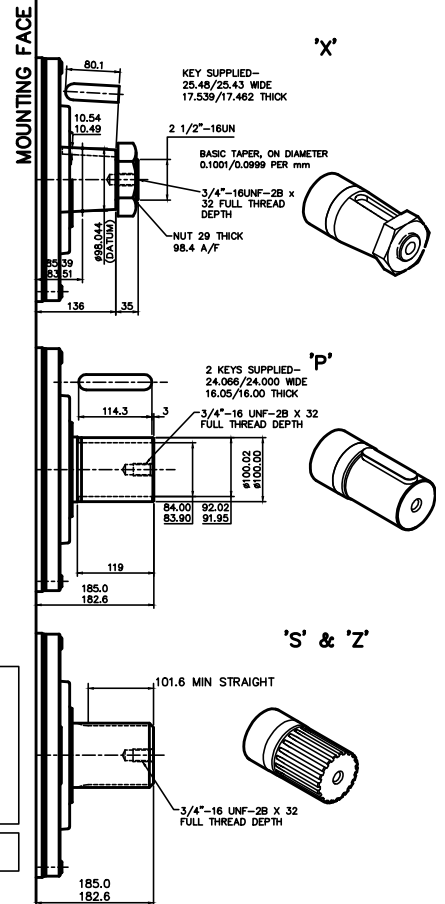
5 HOLES #20 EQUI-SPACED
AS SHOWN ON A $\phi 19.1$ PCD.
SPOTFACED TO #38

2 DRAIN PORTS 3/4"-16UNF-2B
SPOTFACED TO #38
(1 NORMALLY PLUGGED)



SHAFTS

EXAMPLE FOR MODEL CODE -
HMHDB400/P/70



SPLINE DATA

'S'
TO BS 3550 (ANSI B92.1, CLASS 5)
FLAT ROOT SIDE FIT, CLASS 1
PRESSURE ANGLE 30°
NUMBER OF TEETH 23
PITCH 6/12
MAJOR DIAMETER 100.653/100.526
FORM DIAMETER 92.939
MINOR DIAMETER 92.184/91.625
PIN DIAMETER 8.128
DIAMETER OVER PINS 109.573/109.517

'Z'
DIN 5480 W100 x 4 x 24 x 7h