

LATEST CHECKED DRAWN	CHECKED 3	CHECKED 2	CHECKED 1	APPROVED
Revision				
Surface roughness(Ra)				
(1) 2.5μm (RMS) to ) R0.7				
(2) 0.25μm (RMS) to ) R12.5				
(3) 0.8μm (RMS) to ) R3.2				
(4) 0.25μm (RMS) to ) R4.0				
Thread of screw thread : JIS Grade 2				

	Port name	Port size	On delivery	Tightening torque N <sub>m</sub> (lbf <sub>ft</sub> )
A	Delivery port	SAE J518C High pressure (Code 62) 1 1/4"	Covered with tape	157 (115.8)
B	Suction port	SAE J518C Std. pressure (Code 61) 2 1/2"	Covered with tape	98 (72.3)
Dr	Drain port	SAE J1926/1 Straight thread O-Ring boss 3/4" O. D Tube 1 1/16-12UN-2B	Attached with steel plug	167 (123.2)
Pl	Load sensing port (Type L0, L1)	SAE J1926/1 Straight thread O-Ring boss 1/4" O. D Tube 7/16-20UNF-2B	Attached with steel plug	12 (8.8)
Pc	Pressure control port (Type P0)	SAE J1926/1 Straight thread O-Ring boss 1/4" O. D Tube 7/16-20UNF-2B	Attached with steel plug	12 (8.8)
Tair	Air bleeder port	SAE J1926/1 Straight thread O-Ring boss 1/4" O. D Tube 7/16-20UNF-2B	Attached with steel plug	12 (8.8)

Operating specifications

Displacement	cm <sup>3</sup> (in <sup>3</sup> )	112 (6.83)
Max. self priming speed	min <sup>-1</sup>	2200 (Clockwise viewed from shaft end)
Rated pressure	bar (psi)	320 (4600)
Peak pressure	bar (psi)	350 (5000)
Pump model name	K3VL112/B-1DR <sup>SS</sup> <sub>KM</sub> L1 /1-** ( ** : Identify code for horsepower setting )	

Notes on mounting and operation

- The pump shaft and flange surfaces should be cleaned. Remove an anti-rust material.
- Do not apply any form of axial loading to the pump shaft.
- The uppermost drain port should be used and the drain piping should be so connected as to keep the casing filled with oil.
- Keep the casing pressure below 1 bar (14 psi) normally, and below 4 bar (58 psi) at its peak.
- Make sure the drain piping led into the oil tank is kept below the surface of the oil (to prevent airtion).
- Make sure the suction pressure in the suction flange is kept above 0 bar (0 psi) normally.
- Mineral antiwear type hydraulic oil should be used.
- For satisfactory service life of the pump in application, the operating fluid should be continuously filtered to a minimum cleanliness level of NAS1638 class 9 or 18/15 to ISO/DIS 4406.
- Provide a 150 mesh (100μm) strainer in the suction line.
- Install a 10μm filter in the return line.
- Allowable oil temperature range : -20~95°.
- Oil viscosity range : 10~1000cSt when 200~1000cSt, take warming up before real working.
- Caution for the vertical mounting.

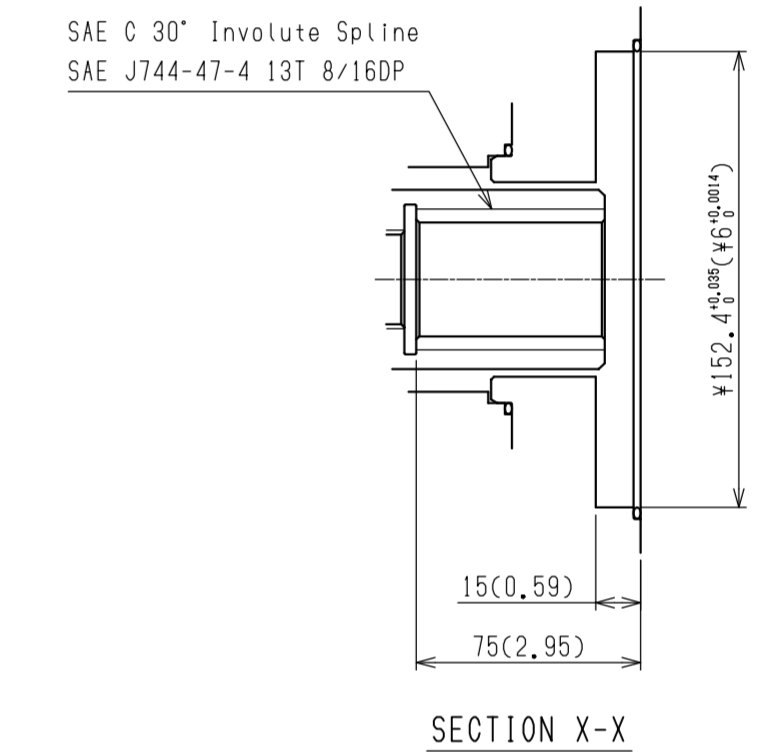
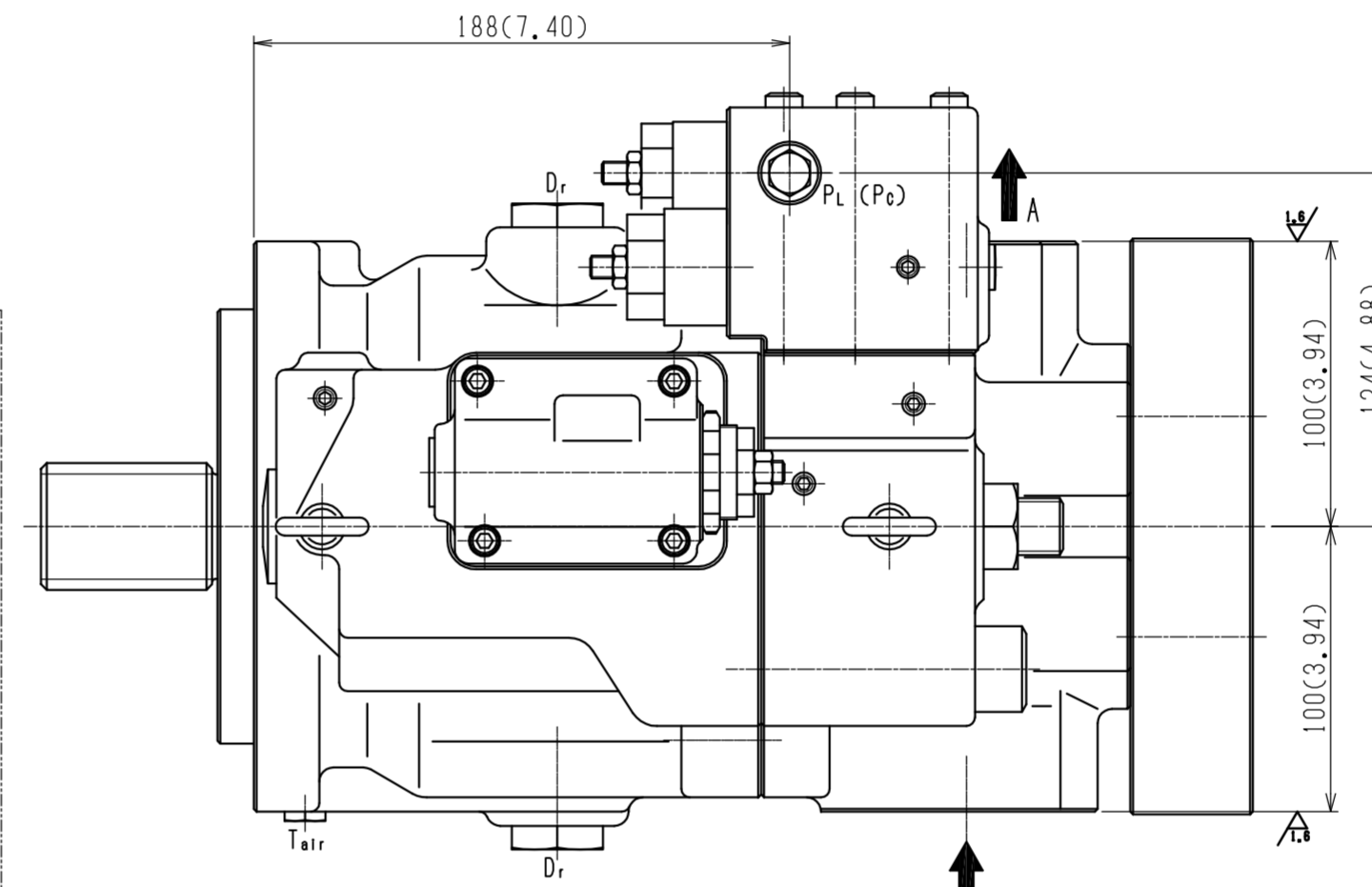
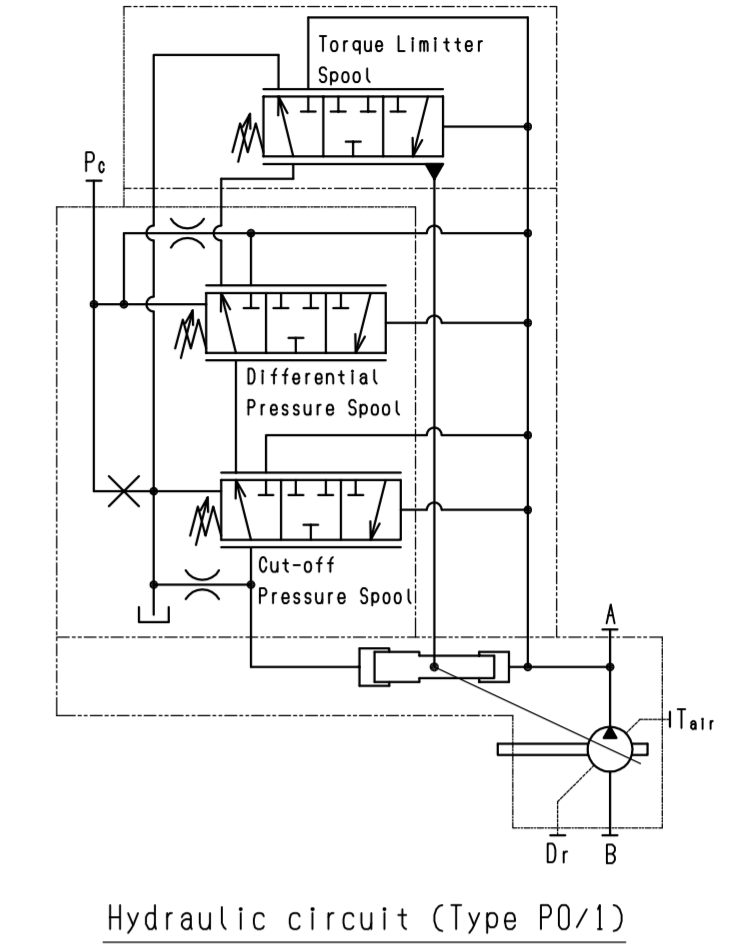
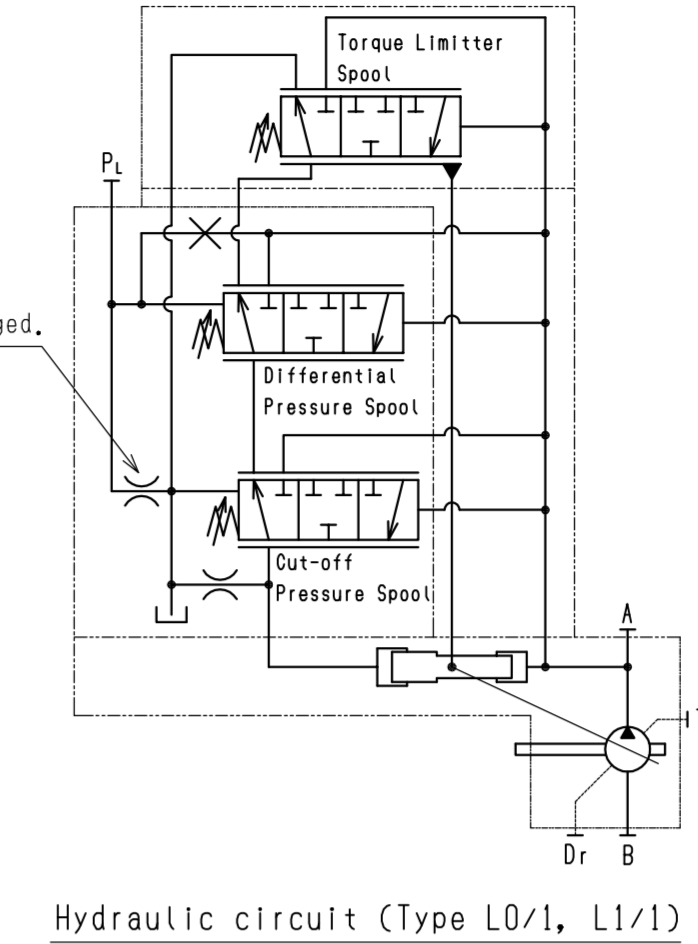
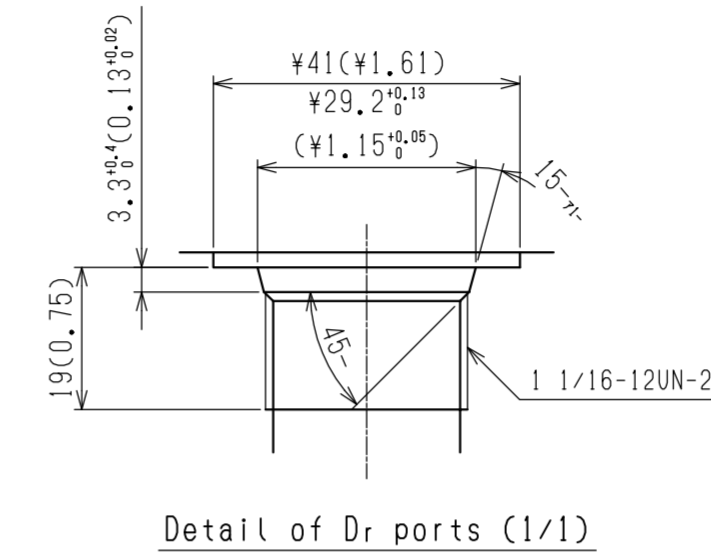
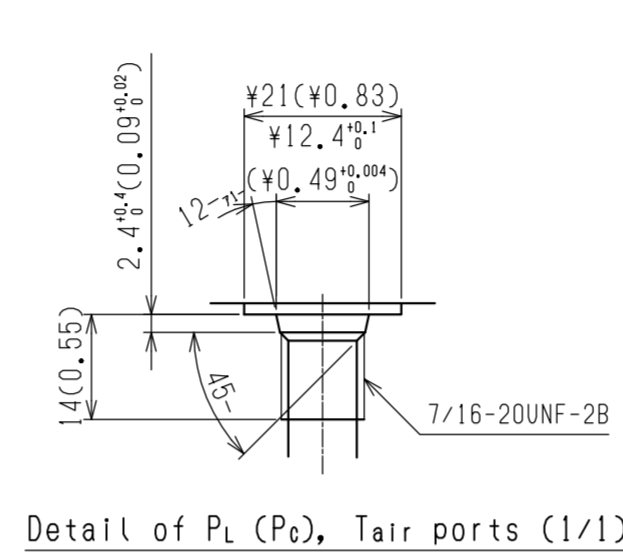
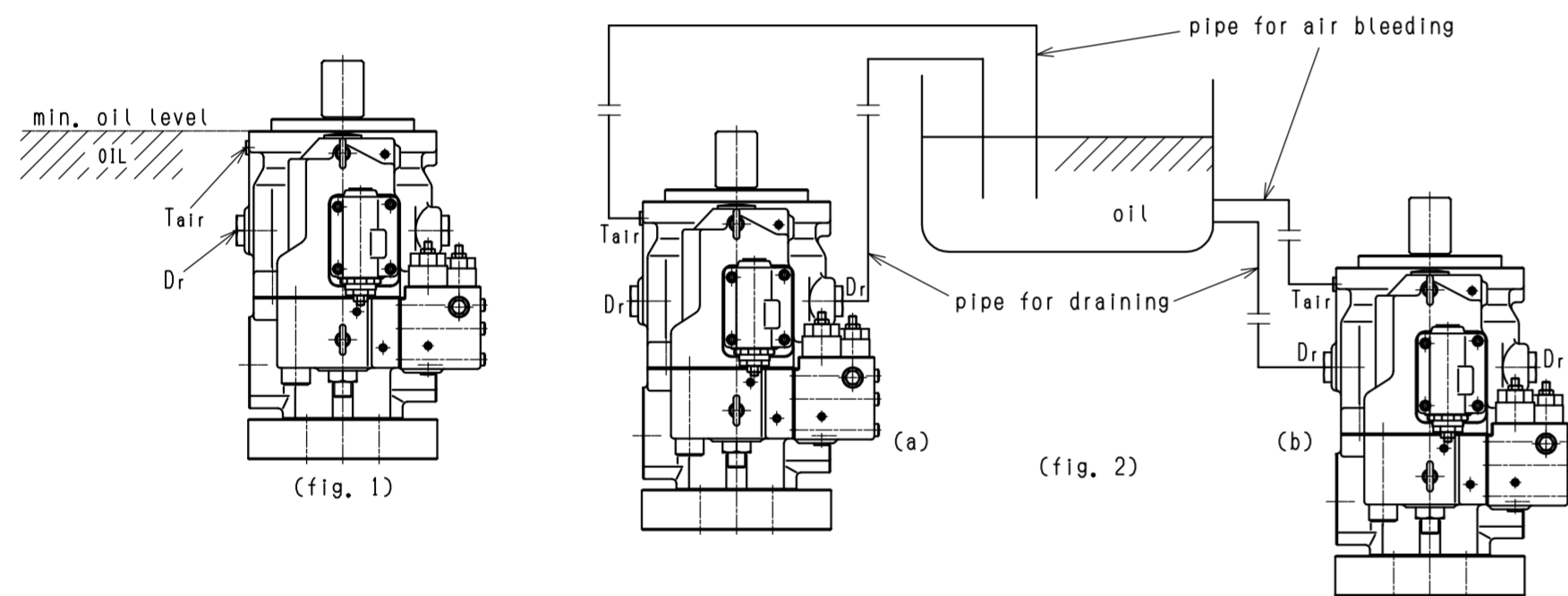
The oil level in the tank should be upper than the pump mounting flange. (fig. 1)  
if the oil level is lower than the pump level, forced lubrication should be made from the air bleeder port. (flow 1~2 l/min)

(a) Installation within a tank

- Open the drain port and the air bleeder port.

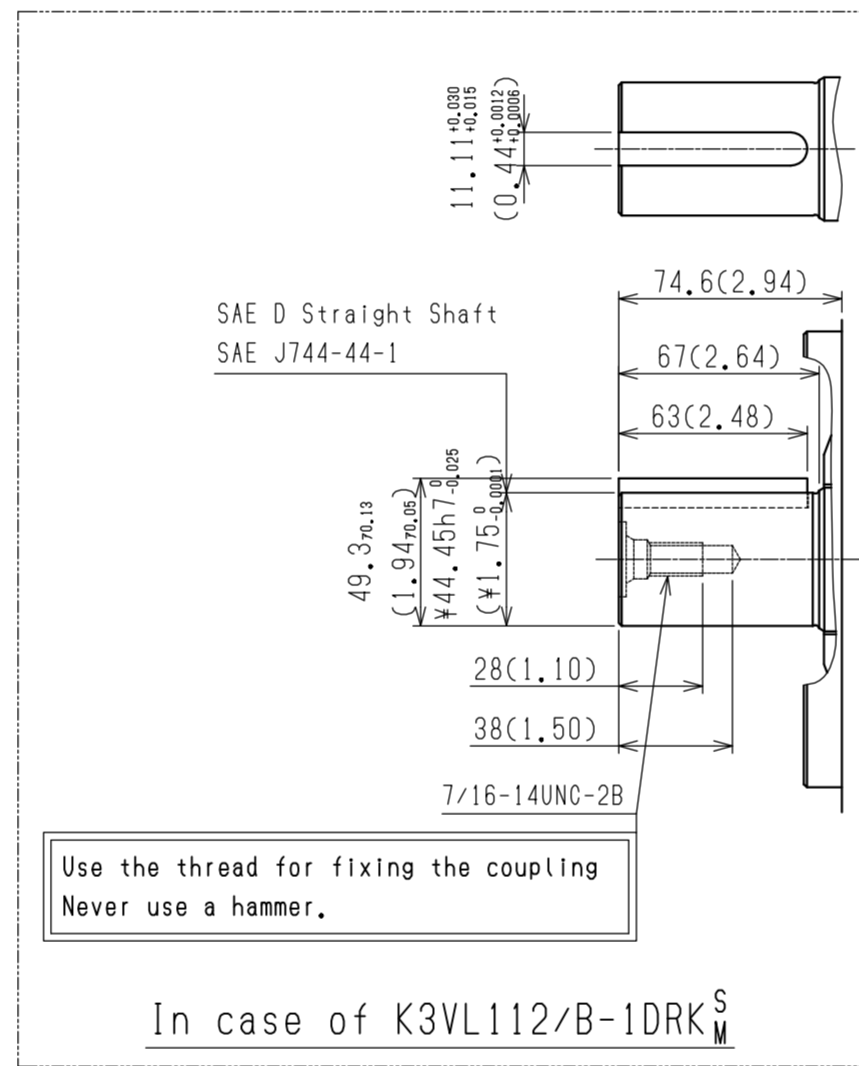
(b) Installation outside a tank (fig. 2)

- Pipe the drain port and the air bleeder port to tank.
- If the pipe for draining or air bleeding is upper than the oil level, it should be filled with oil before starting the pump.

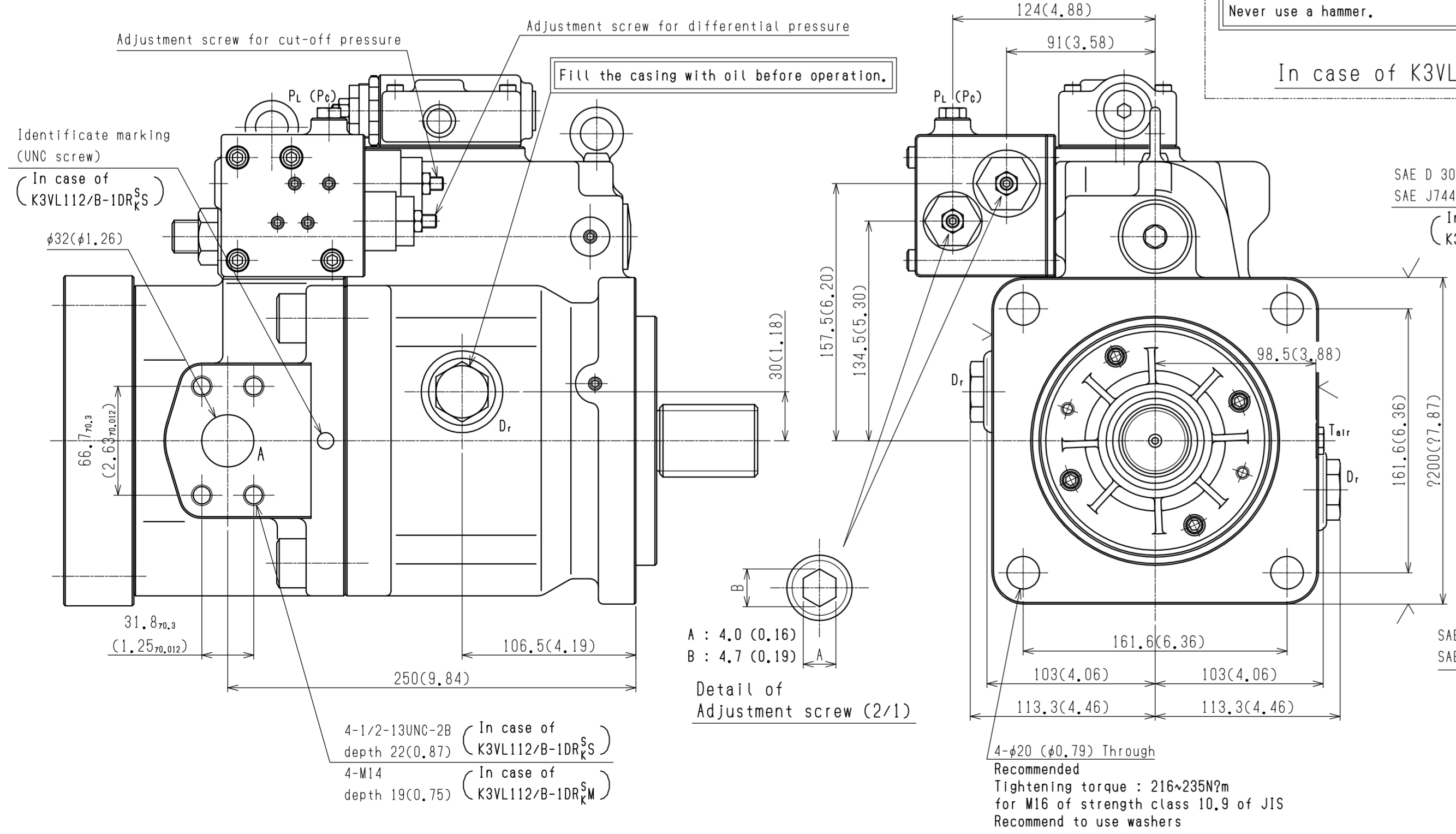


Pump model name	K3VL112/B
Adjustable range of max. displacement	cm <sup>3</sup> 56~112
L	mm 3.8~16

Max. flow adjusting screw  
Approx. displacement change per revolution of screw : 11.5cm<sup>3</sup>

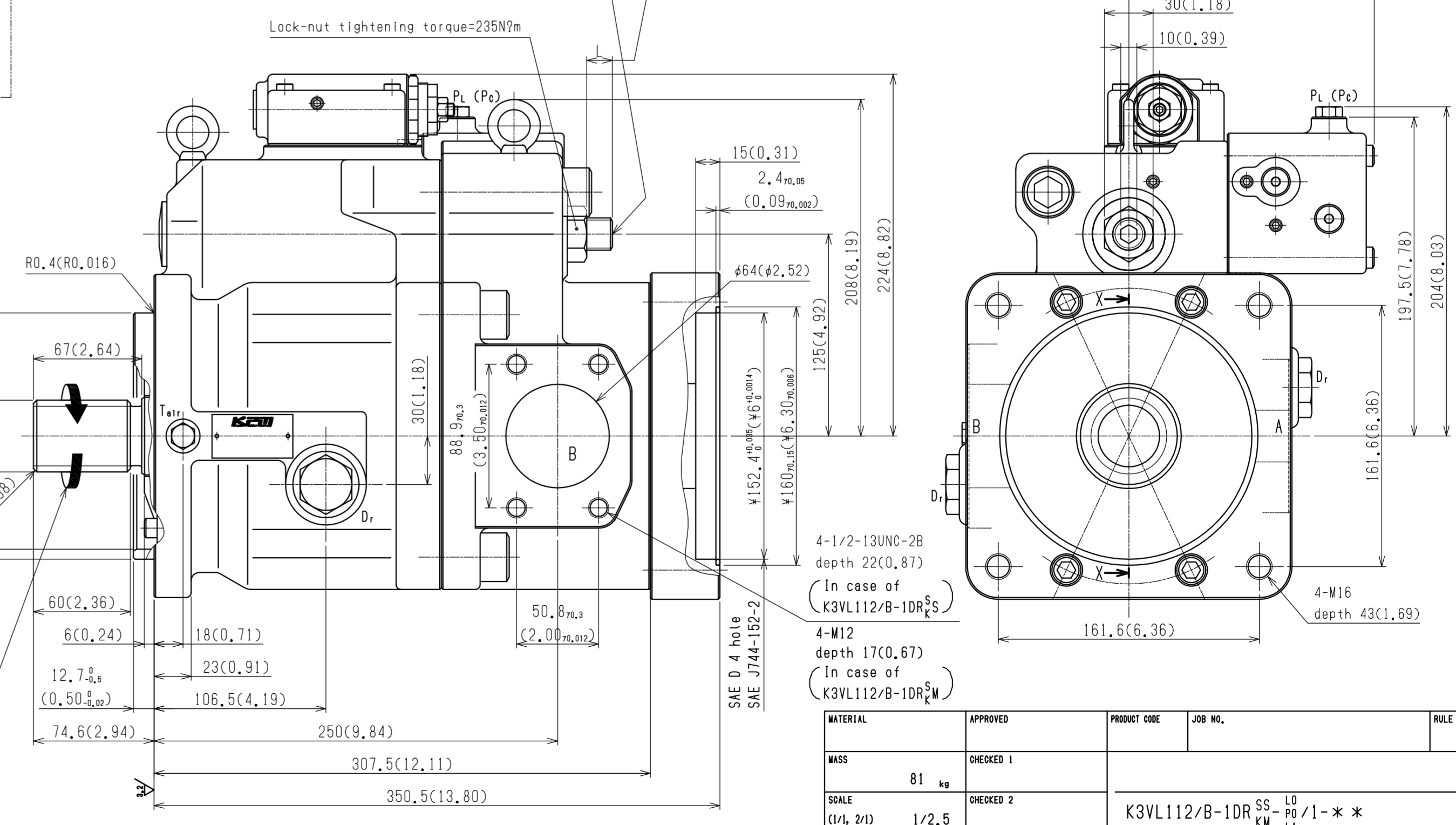


In case of K3VL112/B-1DR<sup>SS</sup><sub>KM</sub>



SAE D 30° Involute Spline Shaft  
SAE J744-44-4 13T 8/16DP  
In case of (K3VL112/B-1DR<sup>SS</sup><sub>KM</sub>)

SAE D 4 hole  
SAE J744-152-4



MATERIAL	APPROVED	PRODUCT CODE	JOB NO.	ROLE
MASS 81 kg	CHECKED 1			
SCALE (1/1, 2/1) 1/2.5	CHECKED 2	K3VL112/B-1DR <sup>SS</sup> <sub>KM</sub> L1 /1-**		
3 RD ANGLE PROJECTION	CHECKED 3	INSTALLATION DIMENSIONS		
DATE Mar. 10, 2005	DRAWN	PART NO.	DWL NO.	SPARE TOTAL
			02430-4465	